

# PULL-A-PART SWAP MEET FORM



*Georgia's Motoring Festival*



Do-It-Yourself  
**Pull-A-Part**  
USED AUTO PARTS

# APRIL 28-29, 2018

ATLANTAMOTORAMA.COM   

The undersigned Vendor, designated below, hereby applies for swap meet space at the Atlanta Motorama held at Atlanta Motor Speedway (AMS) on April 28-29, 2018. AMS is under no obligation to accept or approve this application and will do so at its sole discretion; Vendor will be notified of acceptance via email to the address provided below once application and full payment have been received. Swap Meet vendor shall not have or operate any exhibit, which in the sole discretion of AMS is the source of any objectionable noises, odors, has decorations or other aspects which are considered to be objectionable, including signs, lights, and the manner of dress of Vendor staff. All products to be sold and or displayed in this Exhibit must be listed below for approval by Show Management, any other use of Swap Meet Space is strictly prohibited. AMS reserves the right to accept or reject displays, or ask Vendor to vacate space if persons working vendor location are objectionable in any manner of dress or inconsistent with AMS policies. **PAYMENT TERMS:** Vendor must pay AMS for the full amount requested at time of submission of this form. Please make checks payable to Atlanta Motor Speedway. Swap Meet Space (USED PARTS ONLY) 20' x 20' - **-\$50 (per space)**. Noncompliance with anything stated within this application will subject Vendor to immediate removal from show. **Please review and initial rules and regulations.**

COMPANY \_\_\_\_\_ CONTACT PERSON \_\_\_\_\_

ADDRESS \_\_\_\_\_ CITY \_\_\_\_\_ STATE \_\_\_\_\_ ZIP \_\_\_\_\_

PHONE \_\_\_\_\_ CELL \_\_\_\_\_ FAX \_\_\_\_\_

EMAIL \_\_\_\_\_

PRODUCTS TO BE SHOWCASED OR SOLD AT SHOW \_\_\_\_\_

NUMBER OF SPACE(S) \_\_\_\_\_ TOTAL COST OF SPACE \_\_\_\_\_ AMOUNT ENCLOSED \_\_\_\_\_

☐ ADDITIONAL PREMIUM INFIELD PARKING PASS (limit one per entry) - \$15

☐ EXTERIOR CAMPING: ☐ DRY - \$35 ☐ HOOK UPS - \$100

☐ ADDITIONAL EVENT TICKETS - \_\_\_\_\_ \$12 per day \_\_\_\_\_ \$20 weekend pass

**TOTAL AMOUNT INCLUDED**

\$ \_\_\_\_\_

**LIABILITY CLAUSE:** Entrants and participants of Atlanta Motorama by execution of this entry form release and discharge Atlanta Motor Speedway, Speedway Children's Charities, Speedway Motorsports, Inc. and/or its subsidiaries and affiliates and their shareholders, members, partners, officers, managers, directors, employees, and agents from any and known or unknown damages, injuries, losses, judgments, and/or claims from any causes whatsoever that may be suffered by any entrant or participant to person or property. **RAIN OR SHINE EVENT. ALL SALES ARE FINAL. NO REFUNDS.**

**Make checks payable to Atlanta Motor Speedway. Mail all checks and forms to:**

Atlanta Motorama • PO Box 2518, Tucker, GA 30085-2518

**Chas Sydney**  
770-797-5309  
chas.sydney@yahoo.com



**Bruce Wilson**  
770-954-1237  
bwilson4020@gmail.com

## PULL-A-PART SWAP MEET RULES & REGULATIONS

**CREDENTIALS:** Exhibitor will receive two (2) Swap Meet passes, per space purchased, to be used for the purposes of staffing the space.

**SWAP MEET SET-UP:** Swap Meet spaces may be set up on Thursday or Friday from 8 a.m. to 4 p.m. or Saturday and Sunday prior to the gates opening. All Swap Meet displays and staff must be in place prior to the gates opening at 9:00 a.m. Saturday.

**SWAP MEET TEARDOWN:** All displays must remain fully intact until the close of the Event at 4 p.m. on Sunday and MUST be removed by 8:00 p.m. on Sunday. Space holders leaving prior to the end of the Event will forfeit their renewal rights for the following event.

**EVENT TRADEMARKS:** The Event names and trademarks, the Atlanta Motor Speedway name, logo and colors and associated trademarks are the registered trademarks of AMS and may not be reproduced in any manner without prior specific written approval from AMS.

**FOOD & BEVERAGE SERVICES:** All catering will be provided through Levy Restaurants, no other food or beverage services, including alcoholic beverages will be allowed.

**SWAP HOURS:** Exhibitors not staying overnight may enter the exhibit area at 7:30 a.m.

Saturday	9 a.m. – 5 p.m.
Sunday	9 a.m. – 4 p.m.

**PARKING:** Space holder will receive one (1) "Swap Meet" vehicle pass per space purchased allowing access to the infield, pass must be affixed to windshield of vehicle, and vehicle MUST fit within purchased space. If an additional parking pass is needed, one (1) vendor parking pass per space purchased can be added to this contract for \$15.00. This pass will only allow parking within the Vendor Parking area and will NOT give vehicle access to Swap Meet Area. Additional parking is limited and may not be available for purchase at show.

**SECURITY:** AMS makes reasonable efforts to secure the Swap Meet Area and keeps it staffed with 24-hour security personnel. However, AMS is not responsible for damaged, lost or stolen merchandise.

**TENT RULES:** All tents must be secured with water barrels. No staking is allowed on any portion of the property and parties will be held responsible for any repairs needed resulting from staking of tents.

**NOTICE:** All apparel products must be pre-approved by Show Management. Voice amplified pitching will NOT BE ALLOWED inside any of the buildings.

**CAMPING:** Swap Meeters are able to camp within their purchased space beginning Friday, April 21, 2017 and must vacate area by Sunday, April 23, 2017 at 8:00 p.m. No camping will be allowed in the parking areas or in driving aisle ways.

**NOT ALLOWED:** Campfires (grills only), go-carts, bicycles, hoverboards, drones, rollerblades, skateboards, firearms, fireworks.

**POWER/WATER/SEWER:** Swap Meet area has no access to power, water or sewer for display or campers. However, there are dump stations available outside the facility adjacent to the lake outside Turn 4 and inside the facility, near the bathroom/shower house by the main tunnel. All campers and motor homes on the property must be self-contained. Any dumping of gray water will result in being removed from the event. Portable toilets can be rented from Johnny on the Spot ([www.johnnyonthespotinc.com](http://www.johnnyonthespotinc.com)) but they must fit within your space, no outside or 3rd party portable toilets permitted. Golf Carts, ATVs, Other Unlicensed personal motor vehicles may not be operated on AMS property. AMS gladly allows single passenger motorized vehicles for the physically impaired.

**NOISE ORDINANCE:** The use of public address systems, bullhorns and other devices generating excessively loud noise are prohibited at all times. AMS reserves the right to judge what constitutes excessively loud noise levels and guests in violation may be asked to lower the noise level or leave the premises.

**GENERATORS:** Generators causing excessive fumes and/or noise are not allowed. Generators must be vented to a point at least 8' feet above ground and located such that fumes will not be funneled into surrounding occupied areas. Loud generators must be turned off by 11:00 p.m. each night.

**PETS:** All pets must stay within your purchased space; please do not walk pets along roadways. Owners are responsible for cleaning up after pets and must dispose of the waste properly. Pets must be kept on a leash at all times. Please respect your neighbors; excessive barking and/or aggressiveness is not permitted.

**VEHICLES IN SHOW AREA:** There shall be no movement of vehicles allowed in show area during show hours. Any movement should be approved in advance by AMS and will be granted for Emergency purposes only. Violation will result in being removed from the event and vendor will forfeit their renewal rights for the following event.

**Vendor Initials:** \_\_\_\_\_

**Make checks payable to Atlanta Motor Speedway. Mail all checks and forms to:**

Atlanta Motorama • PO Box 2518, Tucker, GA 30085-2518

# VENDOR/SWAP MEET INFO

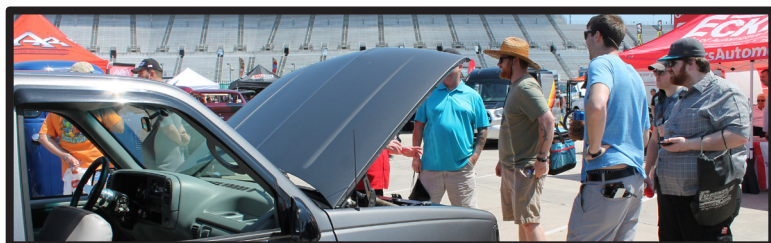


## Georgia's Motoring Festival



Atlanta Motor Speedway welcomes back more than 18,000 passionate fans to Georgia's Largest Motoring Festival. For the fifth year in a row, Summit Racing Equipment Atlanta Motorama will showcase an abundance of vehicles from all makes and models, unique vendor displays and a thrilling weekend full of activities, celebrity guests, live entertainment and more!

**From its inception, Summit Racing Equipment Atlanta Motorama has been designed to engage attendees and benefit partners.**



### SWAP MEET RENTAL RATE

SWAP MEET	20x20	\$50
-----------	-------	------

### MANUFACTURER'S MIDWAY RENTAL RATES

OUTSIDE SPACE	10x10	\$300
OUTSIDE SPACE	20x20	\$900
OUTSIDE SPACE	20x60	\$1140
OUTSIDE SPACE	20x80	\$1260
BIG RIG SPACE	30x80	\$1490

**GROWTH** – Effective branding will raise awareness, shape attitudes and change behaviors -- increasing sales for your brand.

**ENGAGE** – Direct connection with consumers, giving your brand an opening to inform and shape attitudes.

**RECOGNITION** – The distinctiveness of your brand will provide credibility and allow you to build your brand's reputation.

**EDUCATE** – Give consumers the chance to learn about your brand and encourage them to buy products.

**RETURN ON INVESTMENT** – Instantly see a return on your investment through direct sales to your consumer at the event.



# APRIL 28-29, 2018

[ATLANTAMOTORAMA.COM](http://ATLANTAMOTORAMA.COM)





# MORE THAN 200 EXHIBITORS PARTICIPATED IN SUMMIT RACING EQUIPMENT ATLANTA MOTORAMA 2017.

*"The Summit Racing Equipment Atlanta Motorama is a unique event that brings many different aspects of motorsports to one place for a fun weekend in the Southeast in the spring of the year. We kick off our travel schedule each year at the event and plan to for years to come. As the event grows we want to be a part of it year after year."*

-Christopher Sondles, President  
Woody's Hot Rodz & The American Tri-Five Association

Accel Motorcycle  
Accel Performance  
AED Performance  
AEM Induction  
Aeromotive, Inc.  
Airaid Premium Filters  
American Tri-Five  
Association  
AMP Research  
AMS Oil Superior  
Performance  
ANCO Wipers  
ARP Racing Products  
Atlanta Auto Restoration  
Auburn Gear, Inc.  
Auto Ventshade  
Autometer  
B & M Automotive  
Baer Disc Brake Systems  
Be Cool, Inc.  
Belltech  
Bestop  
Black Rock Wheels  
BMR Suspension, Inc.  
Bushwacker  
C & R Racing, Inc.  
Carter Fuel Systems  
Centerforce  
Champion Filters  
Champion Spark Plugs  
ClampTite, LLC  
Clayton Machine  
Coker Tire Company  
Competition Cams  
Covercraft  
Cragar Wheels  
Crane Cams  
Custom Coaters ATL  
Demon Carburetion  
Derafe  
Designer Street Rods  
Detroit Loker  
Detroit Speed, Inc.  
Diablosport, Inc.  
Doug's Headers  
Eagle Speciality Products,  
Inc.  
Earl's Performance  
Eaton Aeroquip, Inc.  
Eckler Industries  
Eddie Motorsports, Inc.  
Edelbrock  
Edge Products

Energy Suspension  
Euca-Maxx  
Federal Mogul  
Felpro Gasket  
Fey Bumpers  
Fitech Fuel Injection  
Flaming River Industries  
Flex-a-lite  
Flowmaster  
Flowtech  
Flynn Distributors  
FP Diesel  
Fragola Performance  
Systems  
Fuel Air Spark Technology  
Garage 71  
Gary Brown Enterprises  
Gateway Classic Cars  
Georgia Motorcycle Safety  
Georgia Racing Hall of Fame  
Assoc.  
Gibbs Auto Interior  
Gibson Exhaust  
GoBoxes, LLC  
Griot's Garage  
Grundy Insurance  
GT Performance  
GutterDome  
Hays Clutches  
Hedman Hedders  
Holley Performance Products  
Hooker Headers  
Howards Cams, Inc.  
HP Tuners, LLC  
Hurst Performance  
Hypertech Technologies  
Ididit, Inc.  
Indura Power Lithium Ion  
Batteries  
Ingersoll Rand  
Jailhouse Brewing  
JBA Headers  
Johnson's Hot Rod Shop  
K & N Filters  
KIA Motors  
Lakewood Suspension  
Landmark Dodge  
Legends of Georgia  
Legends Hot Rod Shop  
Lincoln Electric  
Lizard Skin  
Lloyd Design d/b/a Lloyd  
Mats

Lokar, Inc.  
Lunati  
Lund Industries  
Magnaflow/Car Sound  
Exhaust System, Inc.  
Mahle  
Mallory Ignition  
Marshall Engines, Inc. d/b/a  
Blueprint Engines  
Medieval Times  
Melling Tool Co.  
Mickey Thompson Tires Max  
Trac  
Moog Chassis Parts  
Moroso Performance  
Motive Gear  
MotorHead Media  
MSD Ignition  
National Oil Seal & Bearings  
Nationwide Insurance  
NCM Insurance Agency  
Nitro Gear & Axle  
NOS Nitrous Systems  
Omix-ADA/Rugged Ridge  
Optima Batteries  
Outback Trailers  
Painless Performance  
Products  
Panasonic Automotive  
Pavement Ends  
Perma Cool, Inc.  
Pertronix, Inc.  
Power Stop, Inc.  
Powerhouse Products  
Powermaster  
Powertrax  
Primo Ceramic Grills  
Pypes Performance Exhaust  
QA1 Precision  
Quick Time Performance  
Race Gas  
Racestar Industries  
Racing Head Service  
Ram Clutches  
Rampage  
Richmond Gear  
Rinnai  
Royal Purple, LTD  
RPM Trailer Sales  
Russell Performance  
SCAT Enterprises  
SCE Gaskets  
Scooter Time Rentals

Scorpion Racing Products  
Sealed Power  
Sidney Lee Welding Supply,  
Inc.  
Southern Style Customs  
SPC Performance  
Spectre Hose Braid  
Speedway Garage Tile  
Stainless Steel Brakes Corp.  
Steel Horse Law  
Sterling Pistons  
Streetside Classics  
Summit Gifts, Clothing &  
Memorabilia  
Summit Paint Products  
Summit Private Brands  
Superchips, Inc.  
Taylor Construction  
TCI Torque Converters  
The Dent Specialist  
The Right Stuff Detailing  
Thermo-tec  
T-Max Winches  
Tonno Pro  
Transdapt  
Trickflow  
TUFF BAR  
Tuff Stuff Performance  
Ultimate Air Shuttle  
United Pacific  
US Wheel Corporation  
USA Standard Gear  
Verizon Wireless  
Viarr Corporation  
Vintage Air  
Wade Automotive  
Wagner Lighting  
Wald Professional Products  
Weiland Automotive  
Westin Automotive  
Wheel Vintiques  
Wilwood Engineering  
WK Motorsports  
WyoTech  
Xforce Performance Exhaust  
XS Power  
YearOne, Inc.  
Yukon Gear & Axle  
Zac Brown's Southern  
Ground  
Zex Nitrous

**Chas Sydney**

770-797-5309

chas.sydney@yahoo.com

**Bruce Wilson**

770-954-1237

bwilson4020@gmail.com